

AppNet Solution, LCC has fully integrated with [Testhouse](#) for all testing service needs. The main focus of this partnership was to fill the gap that most IT service providers lack in today's market. The goal is to provide our clients a fully tested product as part of our quality service delivery commitment.

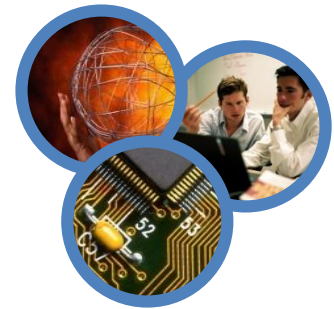
Introduction to Testhouse

Testhouse is a global company established in February 2000 specializing in Quality Assurance Consulting, Software Testing Solutions and Training. Headquartered in London, United Kingdom, Testhouse maintains regional operations in North America, The Middle East and Asia Pacific.

An IT consultancy specializing in IT Risk Mitigation committed to delivering our services using industry best practice. With our extensive industry knowledge across a wide range of industry verticals and technical expertise, our skilled consultants can engage with clients collaboratively improving operational performance whilst reducing any inherent risks.

- ✦ Over 9 years' experience in providing managed testing services across a range of different vertical markets.
- ✦ Built up a reputation for quality and reliability.
- ✦ Help clients optimize their testing processes.
- ✦ Increase the quality of the software and the efficiency of test delivery.
- ✦ Testhouse's on-site, off-site and offshore virtual delivery model allows us to provide world-class testing solutions to our clients in a cost-effective manner in addition to achieving greater operating efficiencies and faster execution of projects.
- ✦ Have fully maintained test facilities when you need them.
- ✦ Significant cost savings
- ✦ Expertise of consultants can be utilized over multiple projects
- ✦ Identifying risks early in the software life cycle can reduce costs, increase your products quality and efficiency as well as your reputation.
- ✦ Achieved an award winning 5000% growth since inception

"Testhouse can provide managed testing service as an independent verification covering the entire testing lifecycle or manage discreet components like: User Acceptance Testing (UAT), Integration Testing or Browser Compatibility Testing. ..."



Industry coverage

- ✓ Banking/Finance
- ✓ Healthcare
- ✓ Governmental Institutions

Testhouse - Major clients are in

[UK & Ireland](#)

[Europe](#)

[Middle East](#)

[Asia Pacific](#)

[Americas](#)

Contact Information

AppNet Solution, LLC.

Email: contact@appnetsolution.net

Service Offerings

- ✓ **Performance Testing** : wealth of experience in providing [performance testing](#) across a wide range of platforms
- ✓ **Test Automation** : Experts in [test automation](#), performance testing, QTP, Quality Center and offshore, managed, web, load, stress and [Mobile Testing](#)
- ✓ **Digital testing as a service** : Provides flexible, reliable and scalable platforms for testing websites, mobile apps and digital media apps with a dedicated test labs; designed specifically for Digital Media organizations
- ✓ **Test tools** : Specialized, in a range of **Test Automation** tools, separates us from our competitors enabling us to recommend the best test automation tool for each project

Testing Methodology



Through this methodology Testhouse can advise on the optimum testing approach for any small, medium or large projects.

Tailored to client

- ✓ **Client Center of Testing Excellence**
 - End-to-End Testing Delivery including:
 - Test Strategy and Approach
 - Required Testing Execution (e.g. Functional, performance, security etc.)
 - Test Data Management
 - Automated Testing
 - Defect Management
 - Reporting / Metrics and Management
- ✓ **Testing Support**
 - Defect Management
 - Reporting and metrics
- ✓ **Testing service and Management Reporting**
 - Assembly
 - Product
 - User Acceptance
 - Regression Automation
- ✓ **Performance Testing**
 - Volume
 - Stress/Load

Engagement Model

Testhouse to provide a brief engagement model description....



Why choose Testhouse?

- Customer testimonials and detailed case studies demonstrate our **commitment** and experience.
- **Proactive** and consultative recommendations to address challenges created by requirement changes based on proven experience.
- **Flexible Engagement Model** - after consultation we will recommend the most efficient approach to address specific engagement requirements including on-site, offsite, offshore or a combination of all three.
- **Client Satisfaction** – Our aim is to be regarded as a long-term trusted extension of our customer’s in-house capabilities
- **Domain Experience** – Our consultants have gained first- hand experience over almost twelve years across most major industry sectors
- **Successful** in satisfying long-term testing requirements



Additional information: <http://www.testhouse.net>